

BIENVENU STEINBERG & C

35 WALKER STREET NEW YORK NY 10013

Stephen Talasnik

The Reincarnant | Viewing Room

September 20 - October 3, 2025

Biennu Steinberg & C is pleased to present an exhibition of drawings by Stephen Talasnik in the Viewing Room. Through “subtractive evolution”, Talasnik uses abandoned notations to build an image for the present. Often otherworldly, each drawing in *The Reincarnant* encapsulates time travel without representation and explores the visual vocabulary of archeology, invention, architecture, engineering, and organic structure.

Talasnik unearthed several folios of unfinished drawings started during the pandemic. Rather than continue the path of these unresolved graphite and ink works, he used them as a foundation to rework and discover new images informed by an ongoing passion for architectural and botanical drawing.

The embedded “ghost” images of the past, served as a palimpsest from which to harness more immediate visual images that depict the infrastructure of the metropolis; an ongoing obsession triggered by his admiration for the architectural works of Piranesi, Hugh Ferriss, and Antonio St. Elia, as well as the botanical photographs of Karl Blossfelt, Henry Fox Talbot, and Anna Atkins.

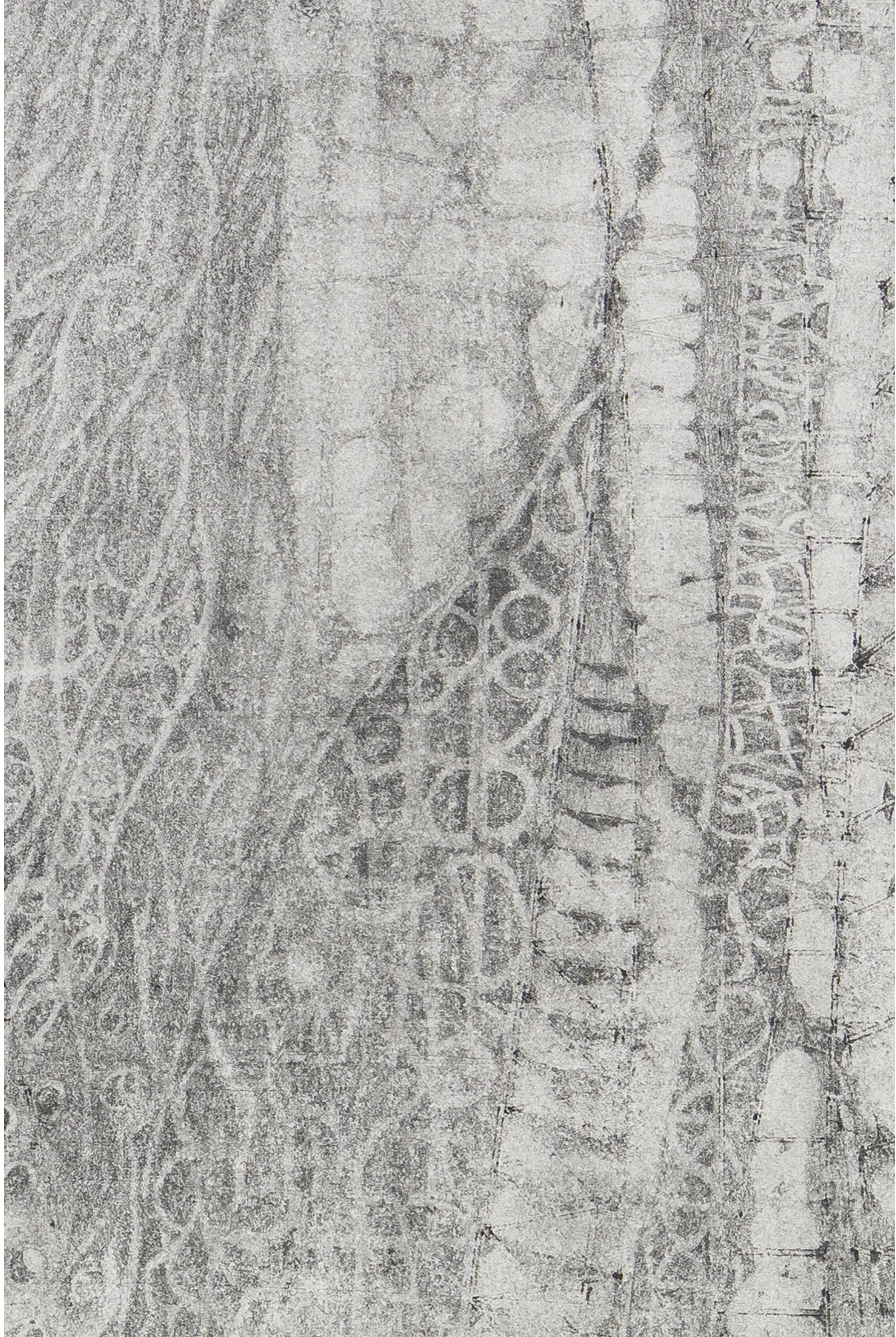
Stephen Talasnik’s drawings are in numerous public collections including the Metropolitan Museum of Art (New York), Centre Pompidou (Paris), Albertina Museum (Vienna), the British Museum (London), National Gallery of Art (Washington DC), and Stedelijk Museum (Amsterdam) to name a few. His large-scale ephemeral installations were featured at the Storm King Art Center, Tippet Rise Art Center, Russel Wright Design Center Manitoga, and the Denver Botanic Gardens among others. Originally from Philadelphia, he is a graduate of the Rhode Island School of Design and Tyler School of Art, Rome. He spent 15 years commuting between NY and Japan, traveling throughout Thailand, The Philippines, China, and Korea.

For more information, please contact [michael@bsandcgallery.com](mailto:michael@bsandcgallery.com).



Stephen Talasnik  
*Vertical Cities #1*, 2024-2025  
Graphite and ink on paper  
30 x 11.25 in  
76.2 x 28.6 cm  
(ST004)

\$12,500



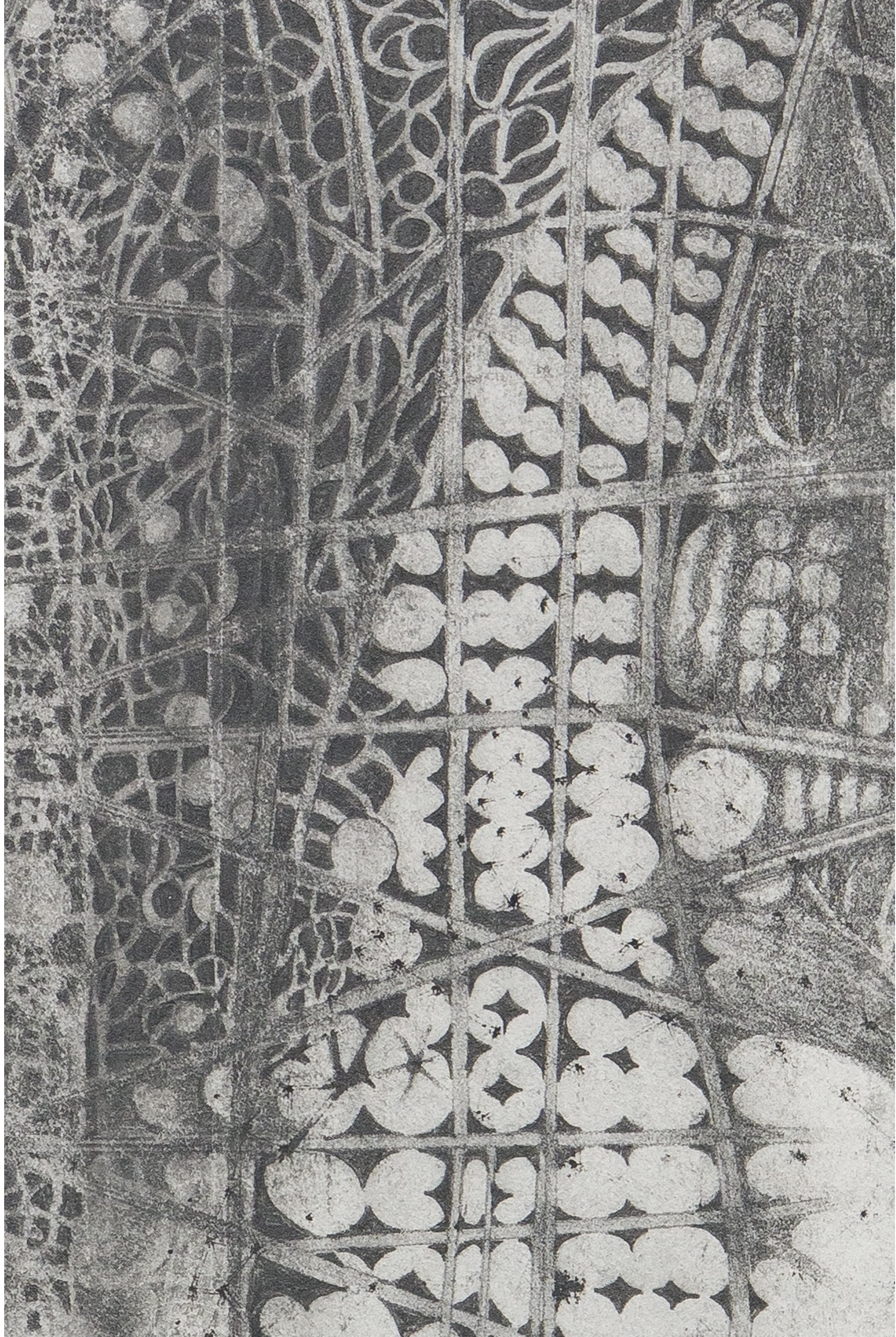
Stephen Talasnik  
*Vertical Cities #1*, 2024-2025  
Graphite and ink on paper  
30 x 11.25 in  
76.2 x 28.6 cm  
(ST004)

Detail



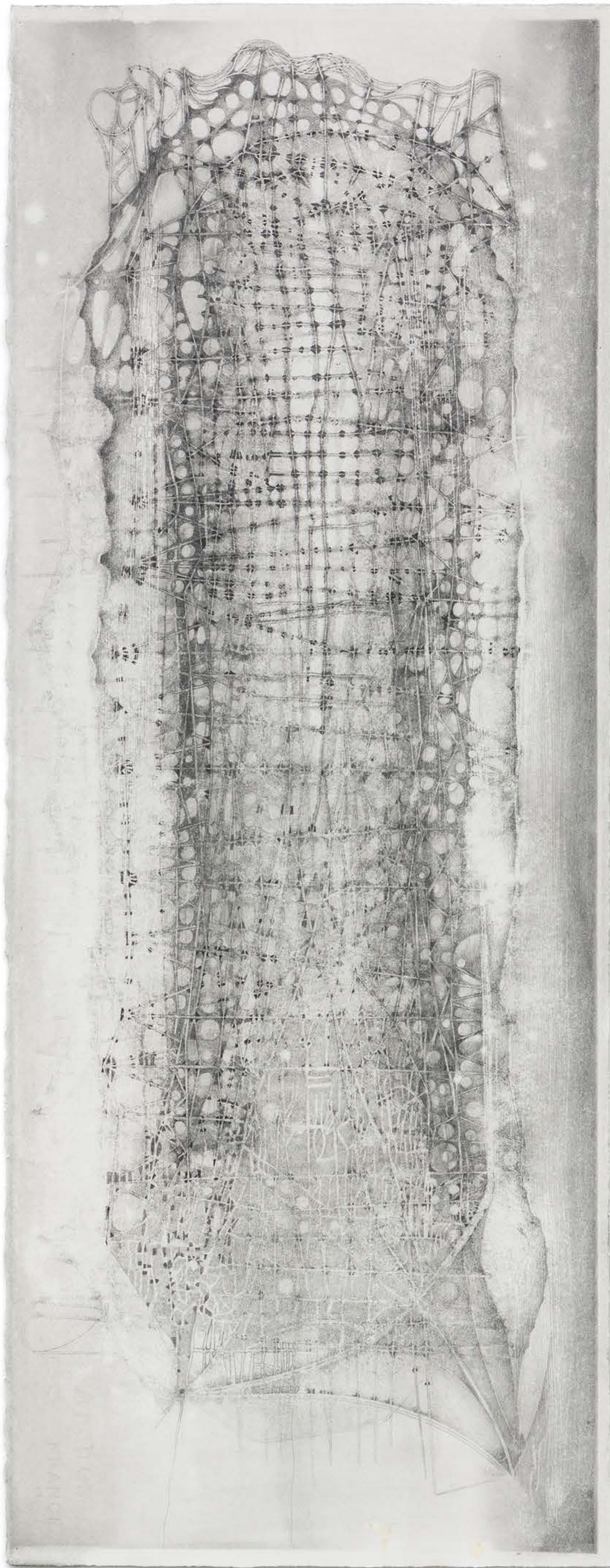
Stephen Talasnik  
*Vertical Cities #2*, 2024-2025  
Graphite and ink on paper  
30 x 11.25 in  
76.2 x 28.6 cm  
(ST007)

\$12,500



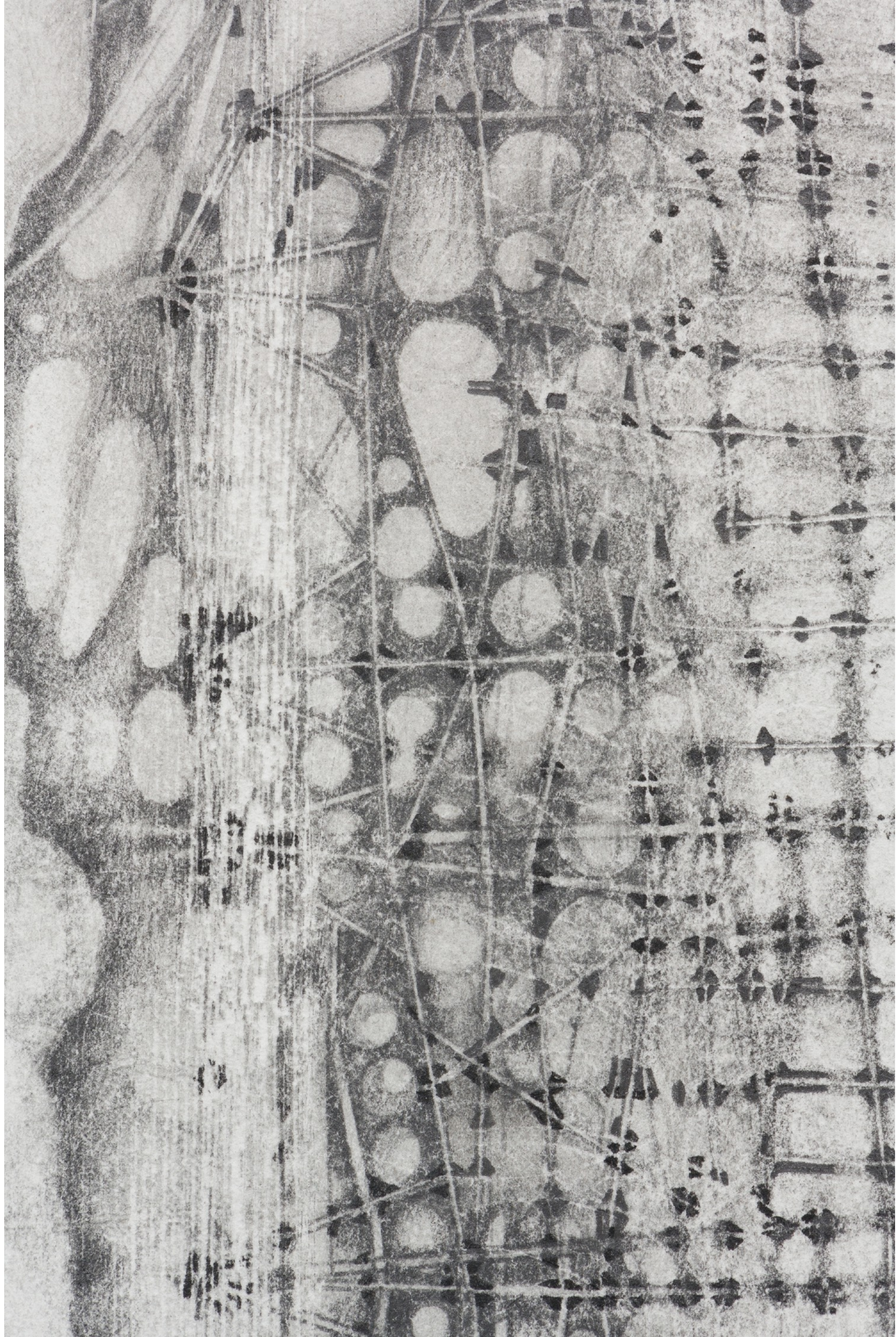
Stephen Talasnik  
*Vertical Cities #2*, 2024-2025  
Graphite and ink on paper  
30 x 11.25 in  
76.2 x 28.6 cm  
(ST007)

Detail



Stephen Talasnik  
*Vertical Cities #3*, 2024-2025  
Graphite and ink on paper  
30 x 11.25 in  
76.2 x 28.6 cm  
(ST006)

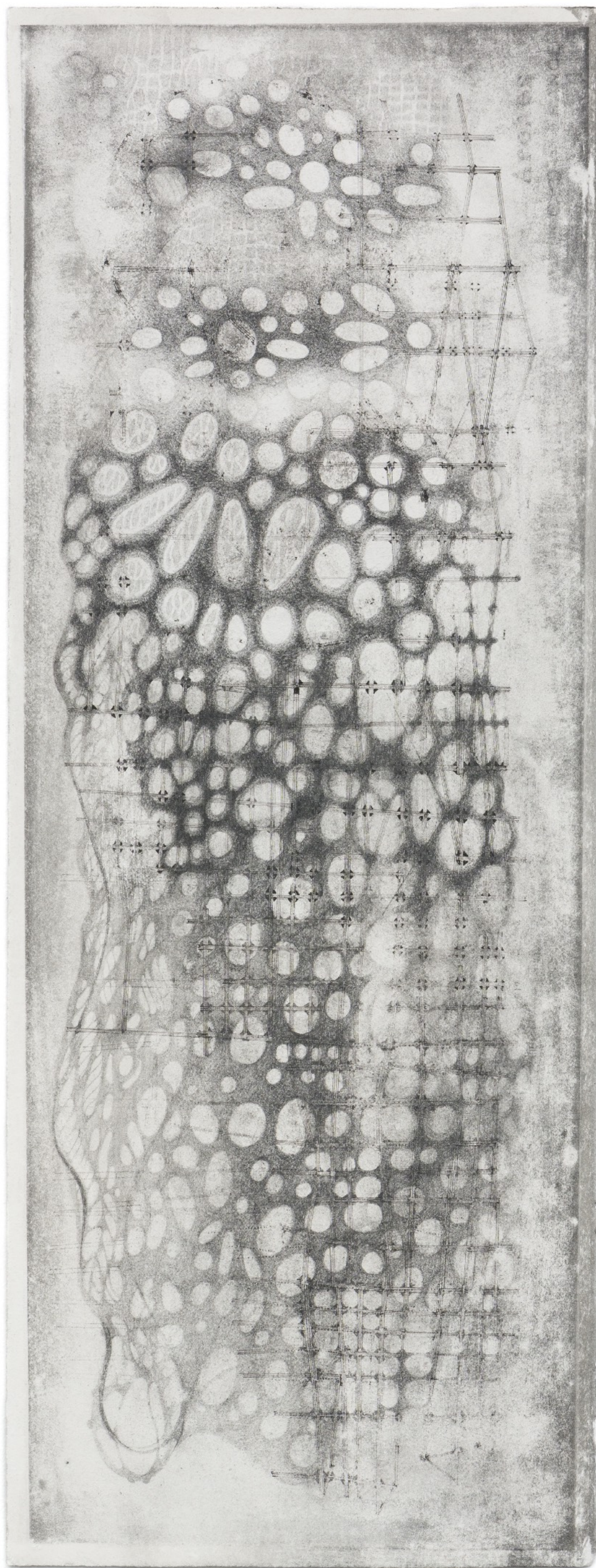
\$12.500



Stephen Talasnik  
*Vertical Cities #3*, 2024-2025  
Graphite and ink on paper  
30 x 11.25 in  
76.2 x 28.6 cm  
(ST006)

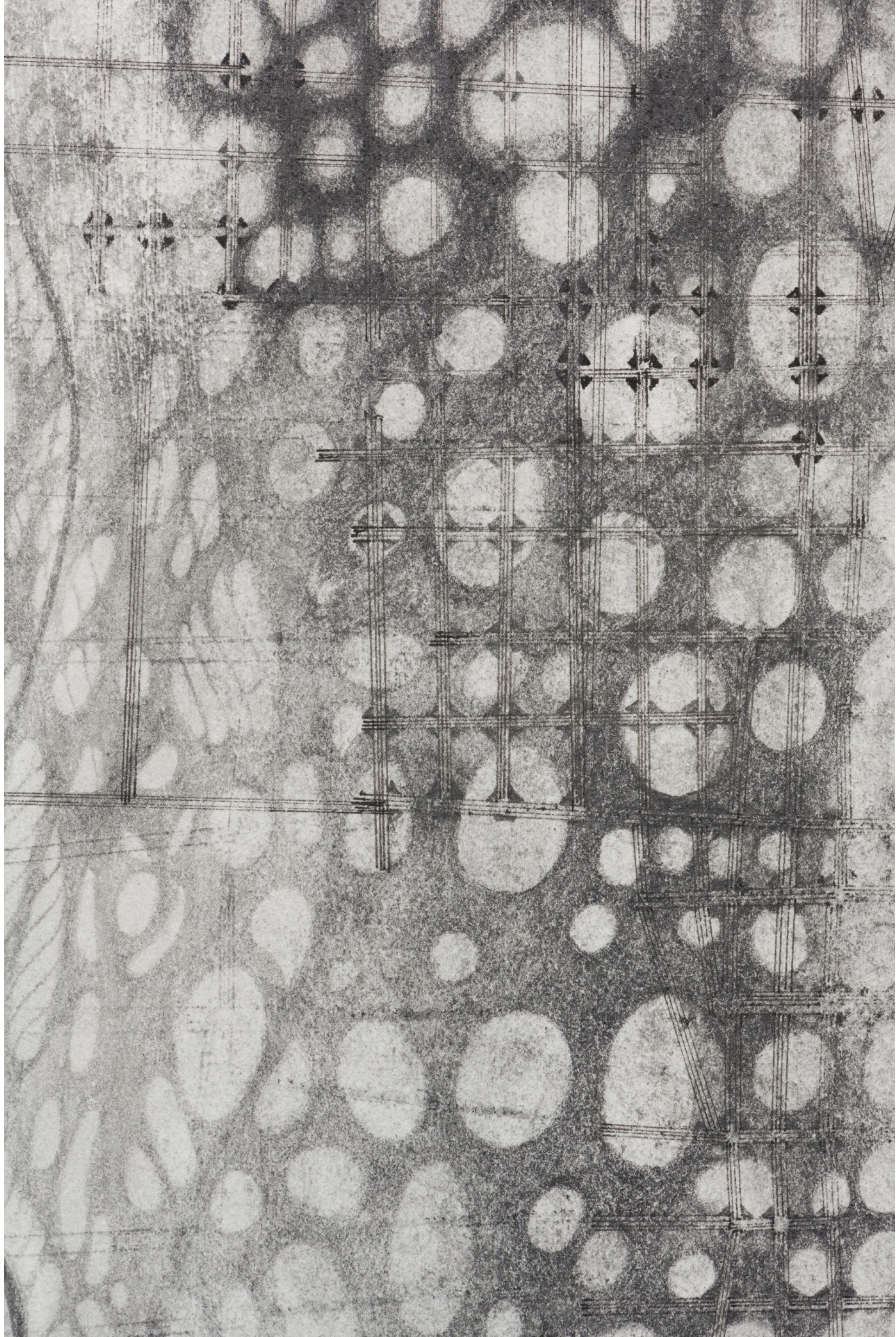
Detail





Stephen Talasnik  
*Vertical Cities #4*, 2024-2025  
Graphite and ink on paper  
30 x 11.25 in  
76.2 x 28.6 cm  
(ST005)

\$12,500



Stephen Talasnik  
*Vertical Cities #4, 2024-2025*  
Graphite and ink on paper  
30 x 11.25 in  
76.2 x 28.6 cm  
(ST005)

Detail



Stephen Talasnik  
*Dwelling #1: Cocoon*, 2025  
Graphite and ink on paper  
20 x 15 in  
50.8 x 38.1 cm  
(ST009)

\$8,500



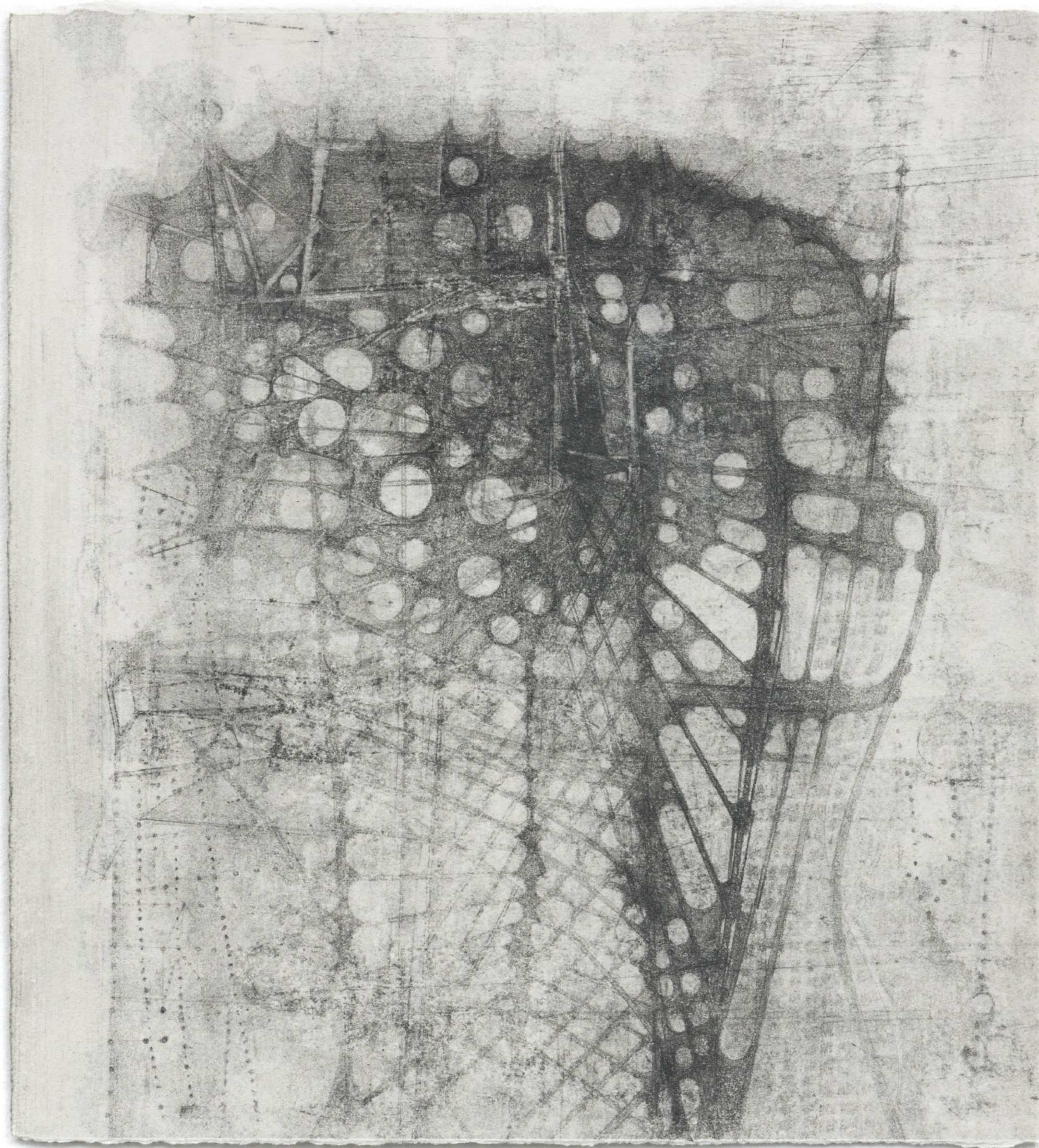
Stephen Talasnik  
*Dwelling #9: Precipice*, 2025  
Graphite and ink on paper  
20 x 15 in  
50.8 x 38.1 cm  
(ST008)

\$8,500



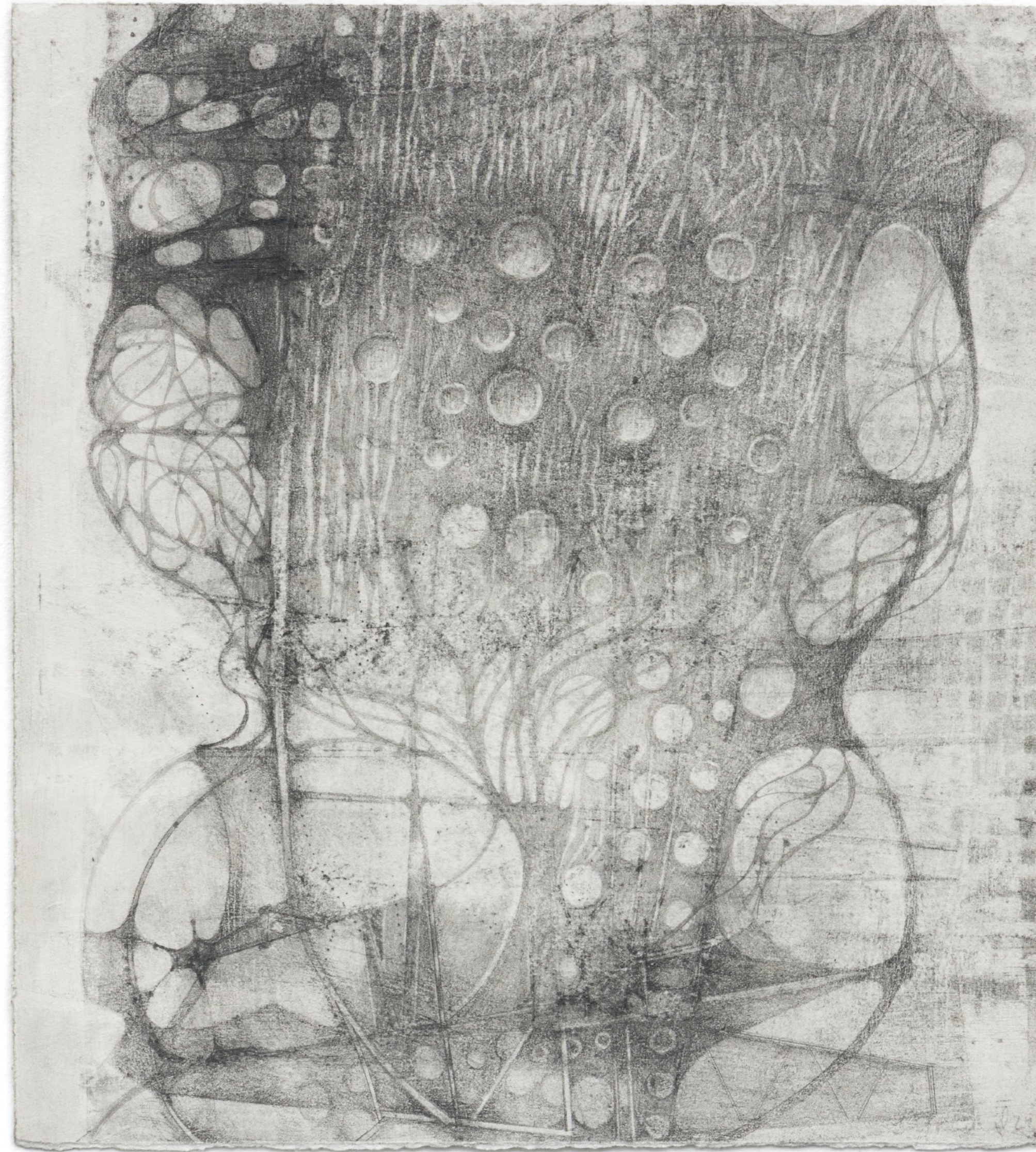
Stephen Talasnik  
*Dwelling #19: Habitat*, 2025  
Graphite and ink on paper  
20 x 15 in  
50.8 x 38.1 cm  
(ST010)

\$8,500



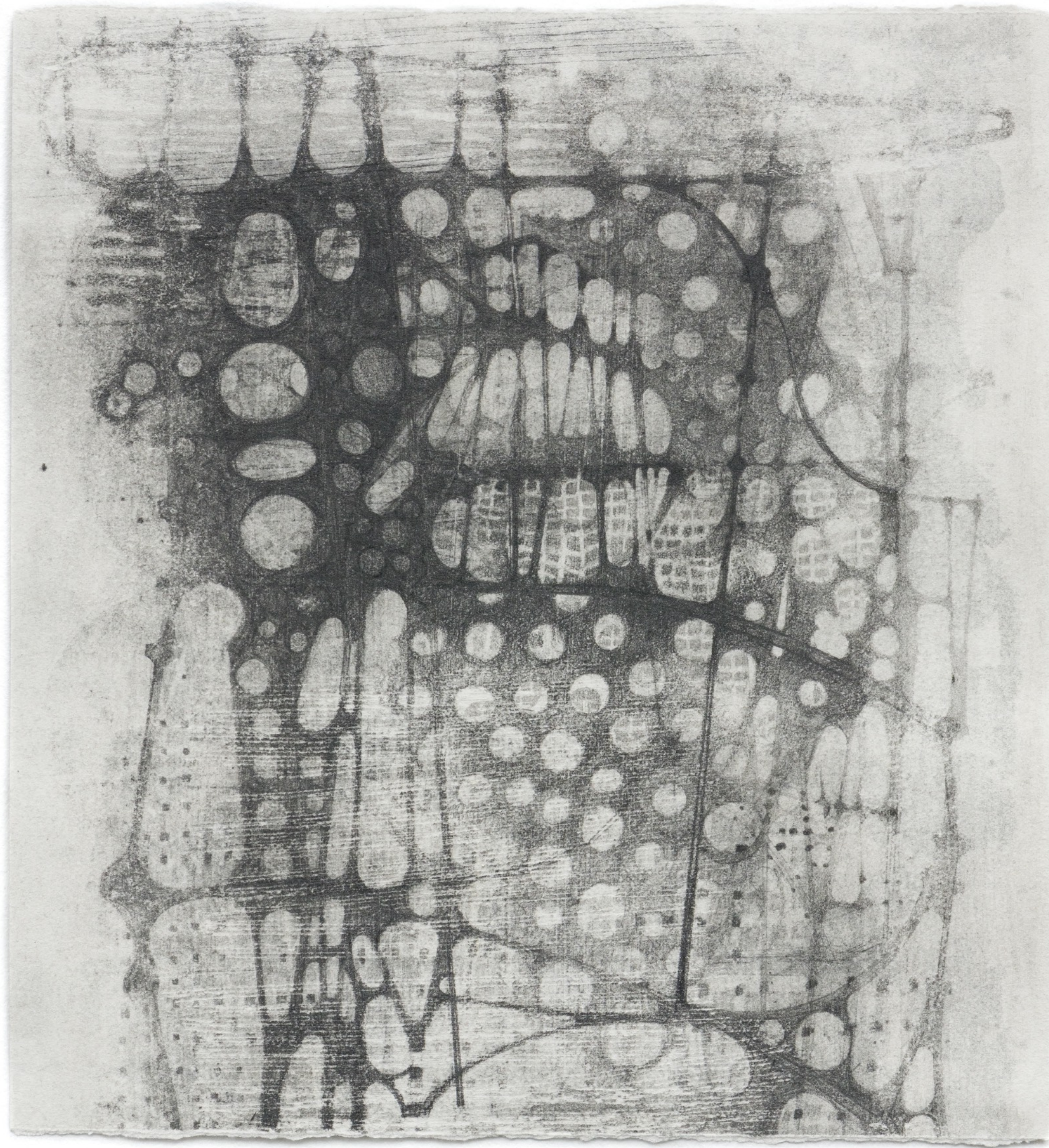
Stephen Talasnik  
*Vertical Terrain #1*, 2025  
Graphite and ink on paper  
11 x 10 in  
27.9 x 25.4 cm  
(ST011)

\$5,500



Stephen Talasnik  
*Vertical Terrain #2*, 2025  
Graphite and ink on paper  
11 x 10 in  
27.9 x 25.4 cm  
(ST012)

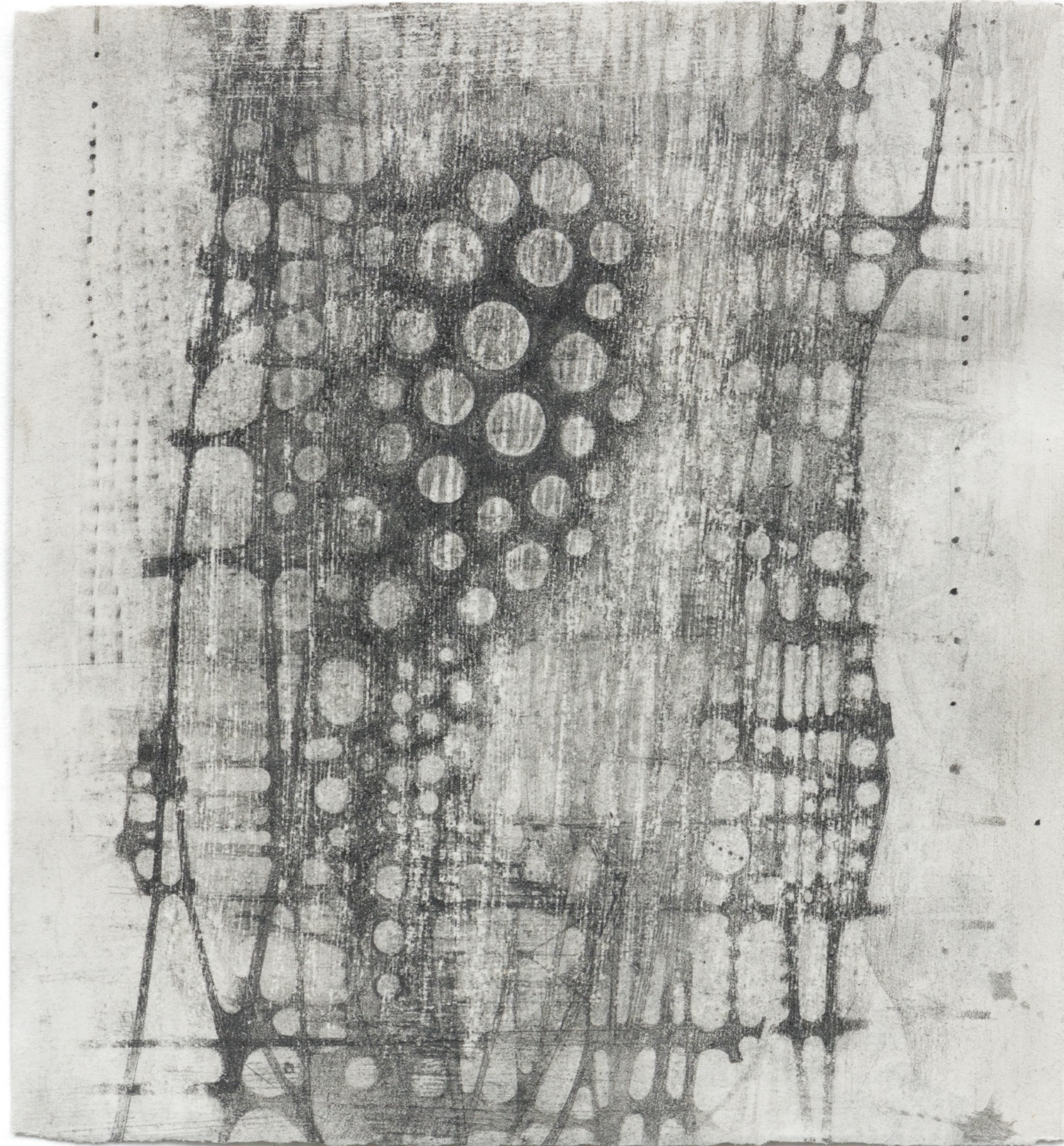
\$5,500



Stephen Talasnik  
*Vertical Terrain #3*, 2025  
Graphite and ink on paper  
11 x 10 in  
27.9 x 25.4 cm  
(ST013)

\$5,500





Stephen Talasnik  
*Vertical Terrain #4*, 2025  
Graphite and ink on paper  
11 x 10 in  
27.9 x 25.4 cm  
(ST014)

\$5,500