

BIENVENU STEINBERG & C

35 WALKER STREET NEW YORK NY 10013

## Summery I Viewing Room

July 12 – August 22, 2025

Jane Yang-D'Haene

Max Gimblett

Christina Hejtmanek

Emilio Perez



Please join us for a viewing room presentation of work by four artists reflecting colorful summer palettes—the gold of the sun, the blues of the sea and sky, the greens and browns of the earth. The exhibition will be on view until August 22.

Born in South Korea, Jane Yang-D'Haene draws upon her cultural heritage to create unexpected ceramic work. She moved to New York in 1984 and attended the Cooper Hewitt School of Architecture from 1988 to 1992. Since beginning her work in ceramics in 2016, D'Haene has experimented with form and function. She is currently working on furniture, lighting, tableware, and many varieties of vessels, all made in clay.

Max Gimblett, born in 1935, Auckland, New Zealand, works as a painter in both New York and New Zealand. Often working on shaped panels or canvases – tondos, ovals, and his signature four-lobed quatrefoil – he marries Abstract Expressionism, Modernism and Spiritual Abstraction with mysticism and traditions of Asian calligraphy.

Christina Hejtmanek utilizes photography, sculpture, painting and drawing to create abstracted images that address concepts of temporality, perception, and varying states of consciousness. Her paintings are executed with pigment-soaked twine and created with a snap line method. Highly active and automatic the images are compulsive, intuitive and meditative investigations of nature, space and geometry, real and interpreted.

Born 1972, New York, Emilio Perez lives and works in Brooklyn, NY. By layering memories and fleeting imagery, the artist evokes a visual experience that seduces the viewer via the dynamic forces of nature together with a desire to understand how the narrative unfolds and where it is destined to go. Influenced by the hues and compositions of classical Renaissance paintings, and surrealist unconscious automatism, Perez's stylistic hybridity plays through in meticulous brushstrokes with elements of abstraction and figuration, recalling mystical landscapes and imaginary worlds.

Please email [contact@bsandcgallery.com](mailto:contact@bsandcgallery.com) for more information.







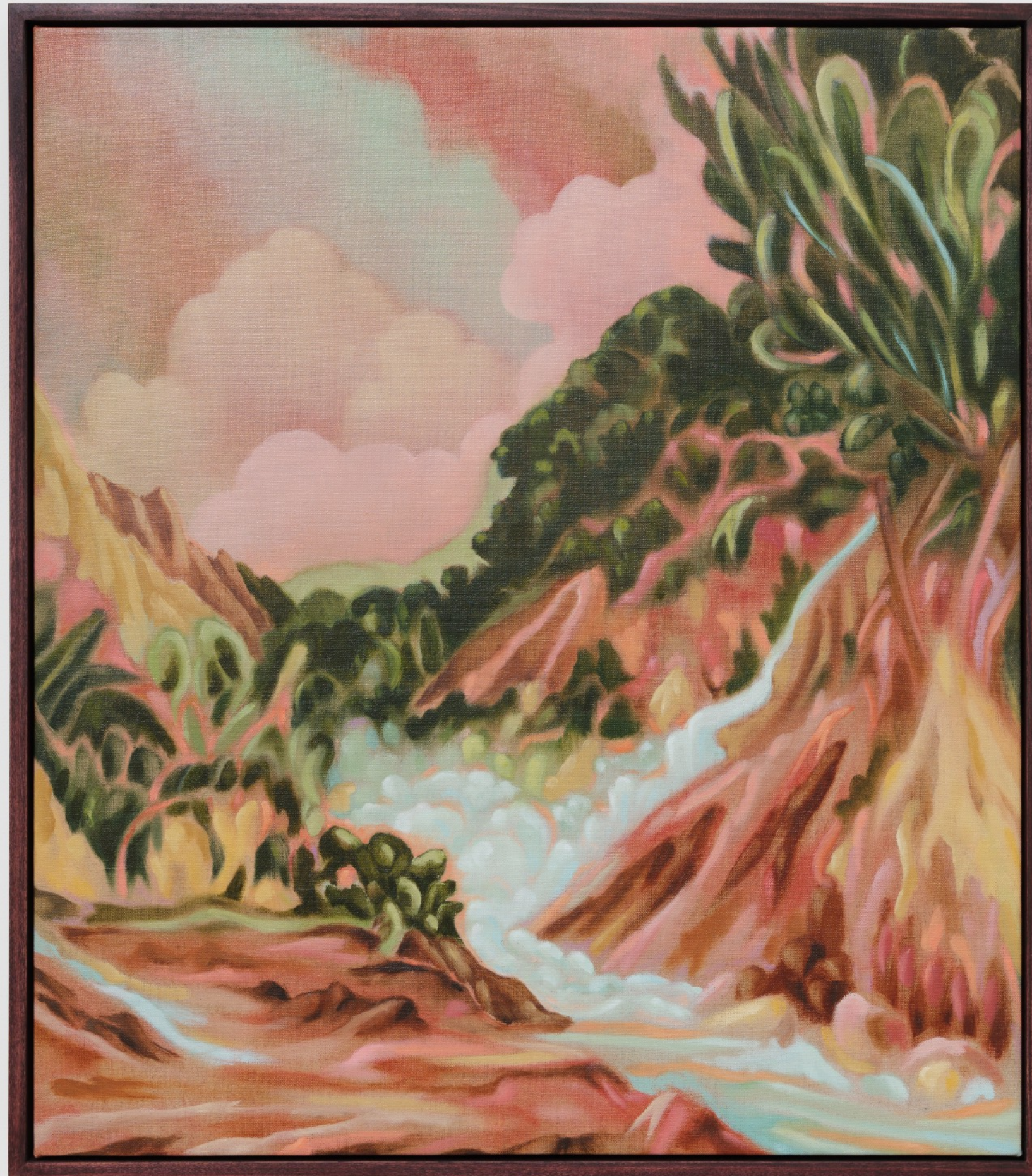






Emilio Perez  
*Notes from the Mona Passage #2, 2025*  
Oil on linen  
32 x 28 in  
81 x 71 cm  
(EPer11)





Emilio Perez  
*Notes from the Mona Passage #1, 2025*  
Oil on linen  
32 x 28 in  
81 x 71 cm  
(EPer10)









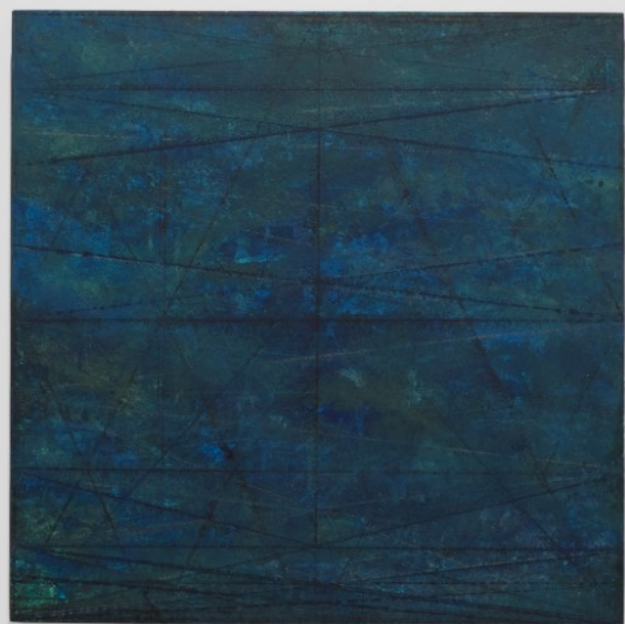
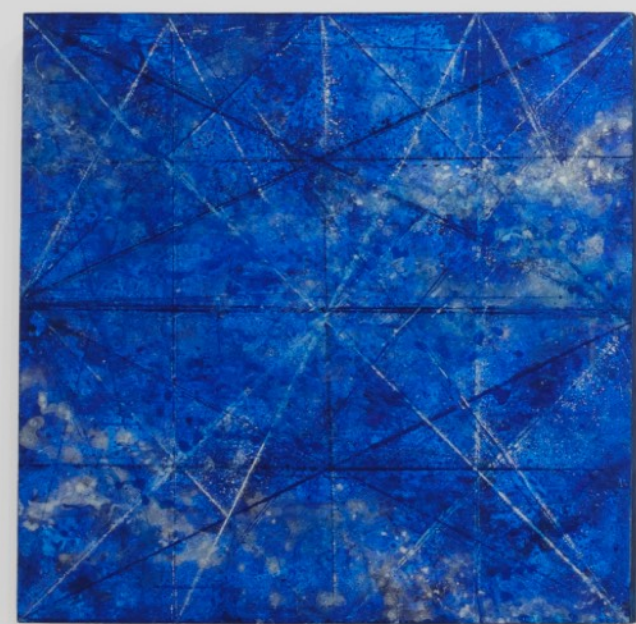
Max Gimblett  
*Harness*, 2025  
Acrylic, Water-Based Size, French Pale Gold Leaf / Canvas  
24 x 24 in  
61 x 61 cm  
Inv: MGP25-037  
(Mgi062)



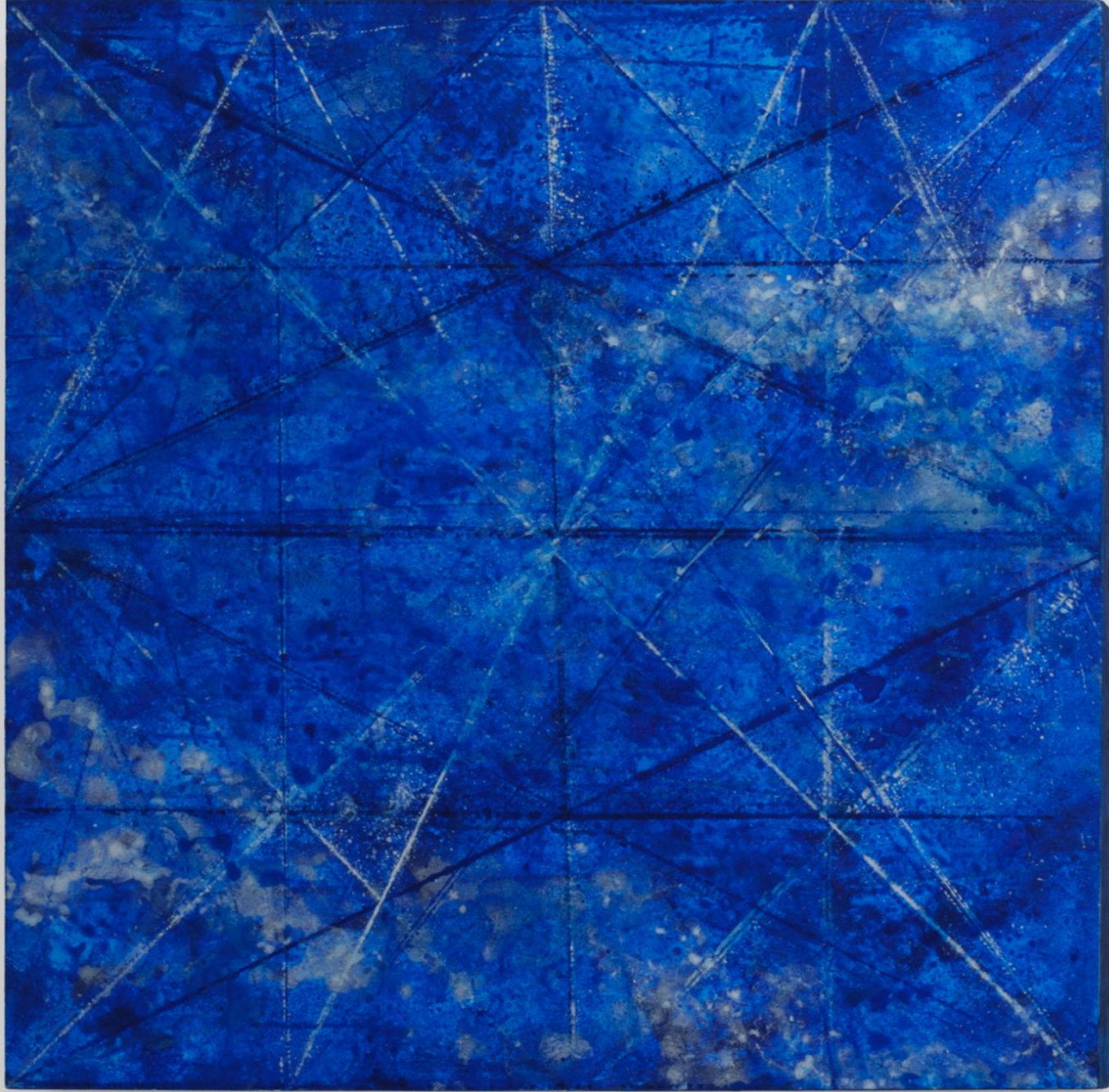


Max Gimblett  
*Inside*, 2025  
Acrylic, Water-Based Size, Rosanoble Gold Leaf / Canvas  
24 x 24 in  
61 x 61 cm  
Inv: MGP25-041  
(MGi061)







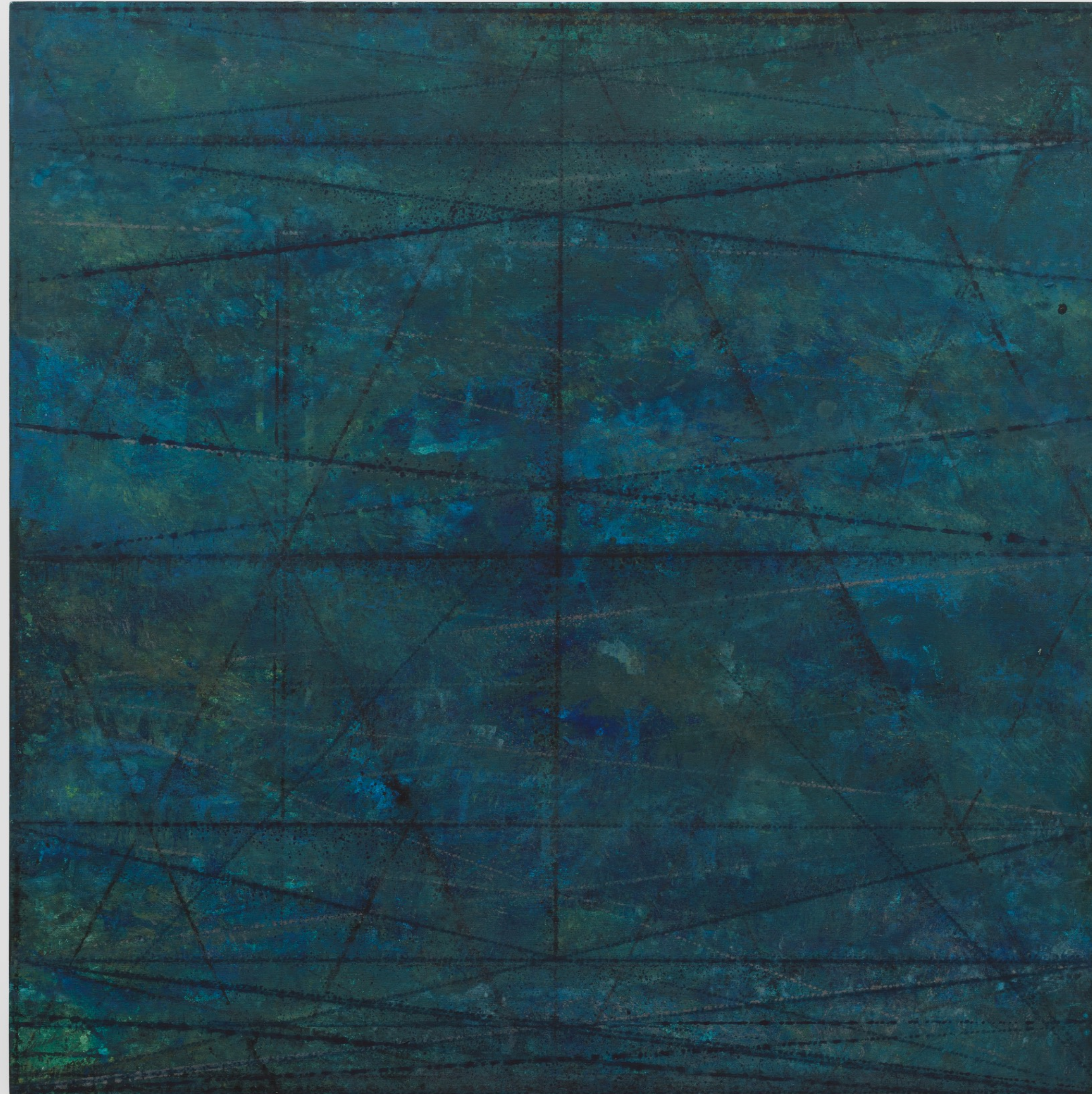






Christina Hejtmanek  
*Sky (Long Island)*, 2025  
Mixed medium on birch panel  
24 x 24 in  
61 x 61 cm  
(The003)





Christina Hejtmanek  
*Water (Long Island Sound)*, 2025  
Mixed medium on birch panel  
24 x 24 in  
61 x 61 cm  
(The004)





Christina Hejtmanek  
*Sun (Long Island)*, 2025  
Mixed medium on birch panel  
24 x 24 in  
61 x 61 cm  
(The002)









Jane Yang-D'Haene  
*Untitled*, 2024  
Porcelain, glaze  
10.5 x 10 x 9 in  
26.7 x 25.4 x 22.9 cm  
Inv: JYD535.24  
(JYDh093)







Jane Yang-D'Haene  
*Untitled*, 2024  
Porcelain, glaze  
11.5 x 10.5 x 11 in  
Inv: JYD536.24  
(JYDh124)







Jane Yang-D'Haene  
*Untitled*, 2024  
Porcelain, glaze  
15 x 13 x 13 in  
38.1 x 33 x 33 cm  
Inv: JYD567.24  
(JYDh081)







Jane Yang-D'Haene  
*Untitled*, 2025  
Stoneware, porcelain,  
and glaze  
24 x 18 x 18 in  
61 x 45.7 x 45.7 cm  
Inv: JYD648.25  
(JYDh110)





